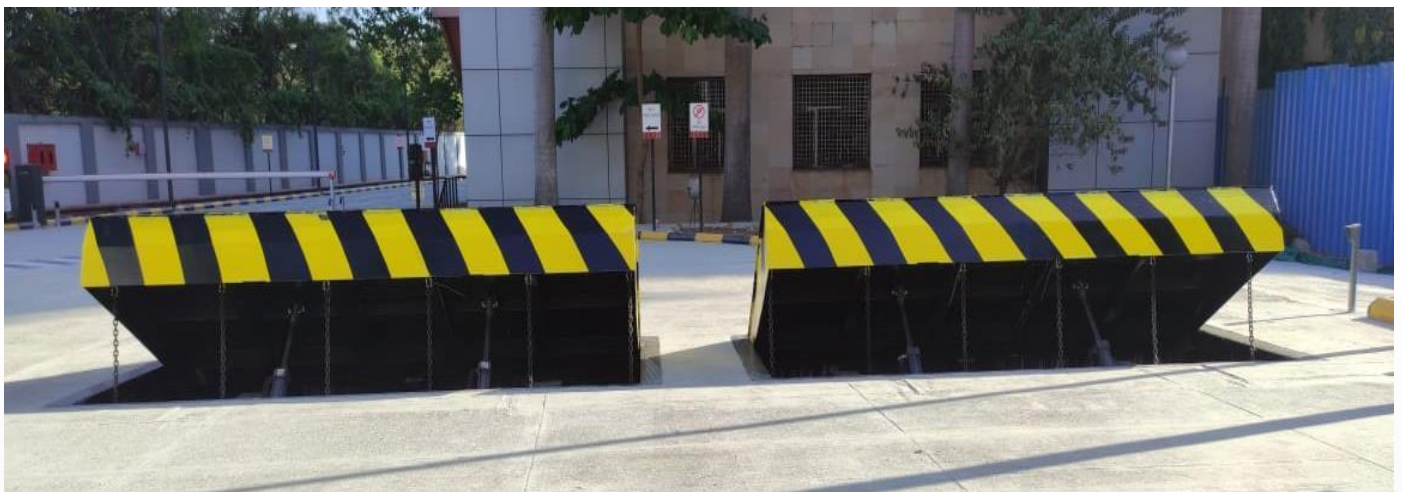


ROAD BLOCKER: BHIM 4

Swaraj Secutech's Road Blocker ensures highest level of security against unauthorised vehicular access. The blocker with its formidable height of blocking segment is designed to provide an effective Hostile Vehicle Mitigation (HVM) solution to every site that is classified as "High Risk".

The product is Crash Engineered, and Impact rated in accordance to the latest standards by ARAI, Pune. The BHIM 4 of Road Blocker was impacted by a fully laden 6.8-ton truck at 48kmph and on each occasion, a complete dead stop of the vehicle within 1m of penetration was achieved.



SALIENT FEATURES

- Impact Tested by a 6.8ton truck @ 48kmph
- Manufactured from proprietary high tensile steel
- Manual Hand pump operation available
- 100% duty cycle
- EFO and Accumulator based powerless operation available on request
- Flexibility to interface with all forms of access control
- Simple and effortless installation
- Provision of drainage
- Weatherproof all weather cabinet
- Inductive loop systems and IR sensors

INDIA

Survey No. 1427, Chhatral-Mehsana Highway, Rajpur Jhulasan Road, Dharpura Chokdi, Jhulasan- 382705, Ahmedabad.

(T) +91 88826 64055,

Email - info@swarajsecutech.com,

Website: www.swarajsecutech.com

UAE

Swaraj Secutech Equipment & Machinery Trading LLC, Warehouse-1, Plot No 1228, Sector 5, New Industrial Area, Umm Al Thaoob, UAQ, UAE (T) +971 508641797, Email: rashid@swarajsecutech.com

Website: www.swaraj.ae

NORTH AMERICA

Swaraj Secutech Canada INC
2300 Yonge street, 1600, Toronto, ON, M4P 1E4
(T) +1 (647) 242-6738

Email: mona@swarajsecutech.com,

SPECIFICATION

Model No.	BHIM 4
Mechanism/Drive Unit	ELECTRO-HYDRAULIC
Rated Blocking Height	1000MM
Rated Blocking Width	4000MM
Product Rating	6.8 TON TRUCK @ 48KMPH
Raising /Lowering Speed	6-8 SECONDS
Power Supply	415 V (AC), 50 HZ / 220V AC , 60HZ
Rated Impact Energy	656 KILO JOULES
Power Failure Operation	MANUAL HAND PUMP
Safety	PHOTO SENSORS FOR HUMAN SAFETY LOOP DETECTOR FOR VEHICLES SAFETY
Accessories (optional)	1. FLASHING LIGHTS FOR GUIDANCE TO DRIVER 2. PUSH BUTTON FOR EMERGENCY OPERATION
Integration	CAN BE INTEGRATED TO ANY ACCESS CONTROL DEVICE INCLUDING BOOM BARRIERS / BOLLARDS / TYRE KILLERS
Electronic Control Board	PLC BASED WITH CUSTOMIZABLE CONTROL LOGIC
Operating Temperature	-30°C to + 65°C



“PROUDLY MADE IN INDIA”

INDIA

Survey No. 1427, Chhatral-Mehsana Highway, Rajpur Jhulasan
Road, Dharpura Chokdi, Jhulasan- 382705, Ahmedabad.

(T) +91 88826 64055,

Email - info@swarajsecutech.com,

Website: www.swarajsecutech.com

UAE

Swaraj Secutech Equipment & Machinery Trading LLC,
Warehouse-1, Plot No 1228, Sector 5, New Industrial
Area, Umm Al Thaoob, UAQ, UAE (T) +971 508641797,
Email: rashid@swarajsecutech.com
Website: www.swaraj.ae

NORTH AMERICA

Swaraj Secutech Canada INC
2300 Yonge street, 1600, Toronto, ON, M4P 1E4
(T) +1 (647) 242-6738
Email: mona@swarajsecutech.com,